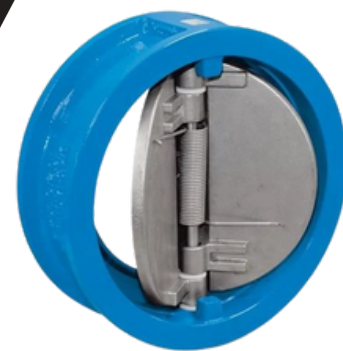




INDUSTRIAL VALVES | AUTOMATION | FLANGES & FITTINGS

WWW.KELORVALVES.COM

RFQ WHATSAPP - +919313543530



WAFER CHECK VALVE (SINGLE/DUAL PLATE)



API 6D | API 594

Material Of Construction : CI | MS | SS 304 | SS 316

End Connections

Wafer Type | Flanged End

Pressure Rating :

ASA 125# | 150# | PN 16

Size Range :

25mm to 1000mm



BUTTERFLY VALVES

API 609 | BS-5155 | BS EN 593

Material Of Construction : CI | DI | CS | SS

Seat & Seals :

Nitrile | Neoprene PTFE | Viton |

Hypalon | Silicon End Connections

Wafer | Lug Ends

Pressure Rating :

ASA 125# | 150# | PN 1.0 | PN 1.6 |

PN 20 | PN 2.5

Type :

Centric Disc Design

Operation :

Lever | Gear

Size Range :

40mm to 500mm



KNIFE EDGE GATE VALVES

MS-SP-81

Material Of Construction : CI |
WCB | SS | WC6 | WC9

End Connections : Wafer Type |
Wafer Lugged | Semi Lugged

Type : BI - DIRECTIONAL | UNI -
DIRECTIONAL

Pressure Rating : PN 10 | PN 6 |
ASA 150#

Size Range : 50mm to 600mm



PULP VALVES

MSS-SP-81

Material Of Construction : CI | CS | SS

End Connections : Wafer
Type | Wafer Lugged Type

Type : Compact Design

Pressure Rating : PN 6 |
PN 10 | ASA 150#

Size Range : 50mm to 600mm



FORGED STEEL VALVES- GATE, GLOBE, CHECK "T"-TYPE STRAINERS

API 602 I BS-5352

Material Of Construction : ASTM A 105 I F304 I
F304L I F316 I F316L I F5 I F9 I F11 I F22

End Connections :

Socket Weld I Screwed I Butt Weld I
Flanged Ends I

Type :

"Y" Type Pattern

Pressure Rating :

ASA 800# I 1500# I 2500#

Size Range :

15mm to 50mm



STAINLESS STEEL - GATE I GLOBE I NRV

SCREWED END

Material Of Construction : SS 304
I SS 316 I SS 304L I SS 316L

End Connections Screwed
to BSP I BSPT I NPT I
Socketweld to ASME B
16.11

Pressure Rating : Body :
425 Psig (30 Kg/Cm2)
Seat : 300 Psig (21
Kg/Cm2)

Size Range :
15mm to 50mm



GATE VALVES

API 600 | API 6D

Material Of Construction : CI | CS | SS |
WCB | WC6 | Wc9

End Connections Screwed to BSP |
BSPT | NPT | Socket Weld | Butt Weld
Ends | Flanged Ends | Ring Type Joints
(RTJ)

Pressure Rating : ASA 125# | 150# |
300# |

Operation : Manual | Gear

Size Range : 15mm to 600mm



GLOBE VALVES

BS-1873 | ND-16 | ND-40

Material Of Construction : CI | CS | SS

End Connections : Screwed to BSP
| BSPT | NPT | Socket Weld | Butt
Weld Ends | Flanged Ends | Ring
Type Joints (RTJ)

Pressure Rating : ASA 125# |
150# | 300# | | PN 16 | PN 40 |
PN 64

Operation : Manual | Gear

Size Range : 15mm to 600mm



INDUSTRIAL STRAINERS

Material Of Construction : Cast Iron I Cast Steel I Stainless Steel

End Connections :
Flanged Ends I Screwed End

Type : "Y" Type I "T" Type I Pot Type I Basket Type

Pressure Rating : ASA
150# I 300# I PN 40

Size Range :
15mm to
800mm



SLUICE & REFLUX VALVES

IS 5312

Material Of Construction : Body : Cast Iron I C.S. with G.M. or S.S. Internals

End Connections :
Flanged Ends

Pressure Rating :

Rating : PN 0.6 I PN 1.0 I PN 1.6
Body : 0.9 Mpa I 1.5 Mpa I 2.4 Mpa
Seat : 0.6 Mpa I 1.0 Mpa I 1.6 Mpa

Type :

Bolted Cover I Swing Type

Size Range :

50mm to 600mm



NON RETURN VALVES

BS-1868 | API 6D

Material Of Construction : CI | CS | SS

End Connections :

Screwed to BSP | BSPT | NPT |

Socket Weld | Butt Weld Ends |

Flanged Ends | Ring Type Joints (RTJ)

Pressure Rating :

ASA 125# | 150# | 300# |

| PN 16 |

PN 40 | PN 64

Type :

Swing | Lift-Up

Size Range :

15mm to 600mm



BALL VALVES-FLOATING & TRUNNION MOUNTED

Material Of Construction : CI | CS | SS | A 105 | F304 | F316 | CF3

Seat & Seals :

PTFE | Reinforced PTFE | Buna-N |

Graphoil | Graphite

End Connections

Screwed to BSPT | NPT | Socket Weld |

Butt Weld with extended Nipple |

Flanged Ends | Butt Weld Ends

Pressure Rating :

ASA 150# | 300# | 800# |

Type :

Single Pc | Two Pc | Three Pc

900#

Operation :

Lever | Gear

Size Range :

6mm to 750mm



GUN METAL I BRONZE VALVES

- Gate Valve as per IS 778 CL-I
- Globe Valve as per IS 778 CL-I
- Horizontal Non Return Valve as per IS 778 CL-I
- Steam Stop Valve



FLANGES & FITTINGS

IBR APPROVED

Material Of Construction : MS | A105 | SS 304 | SS 316 | SS 304L | SS 316L

Rating :

ASA 150# to 2500# | ND-40 |

BS 10 TABLE E | D | F | K | J

Type :

SORF | Blind | WNRF Etc.

Size Range :

15mm to 2000mm

FITTINGS : IBR APPROVED

- Carbon Steel (MS) Seamless Bends
- Long Radius
- MS (Carbon Steel) Elbows
- Long Radius
- MS (Carbon Steel) Concentric Reducers

