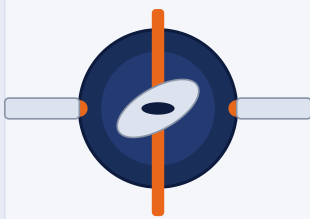


KRISHNA INDUSTRIES

GST REGISTERED · IEC EXPORTER · MSME CERTIFIED · EST. 2017 · AHMEDABAD

VALVES • FASTENERS • FLANGES INDUSTRIAL SOURCING

B2B SUPPLIER—PAN INDIA DISPATCH—QUOTES IN 2 HOURS



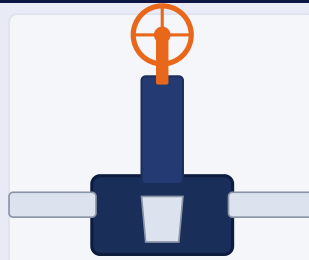
Butterfly Valve

Wafer · Lug · Flanged
FLOW CONTROL



Ball Valve

Full Bore · SS · CS
ISOLATION



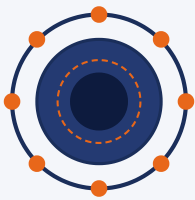
Gate & Globe Valve

OS&Y · PN16–PN64
THROTTLING



Check Valve

Swing · Wafer · Dual Plate
NON-RETURN



Flanges & Fittings

SORF · WNRF · Blind · SO
CONNECTIONS



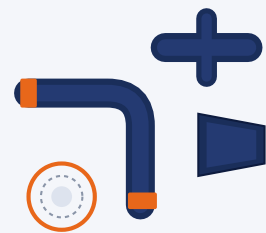
Industrial Fasteners

Bolts · Studs · Nuts · Nord-Lock
STRUCTURAL



Fire Safety Equipment

Extinguisher · Hydrant · Reel
SAFETY



Pipe Fittings & Gaskets

Elbow · Tee · Reducer · SW Gasket
SEALING

Butterfly Valves

Ball Valves

Check Valves (NRV)

Gate & Globe Valves

Industrial Fasteners

Flanges & Fittings

AUTHORISED TRADER & SUPPLIER OF INDUSTRIAL PRODUCTS

INDUSTRIAL VALVES · FLANGES · PIPE FITTINGS · FASTENERS · FIRE SAFETY EQUIPMENT



"COMPLETE RANGE OF INDUSTRIAL VALVES — ALL GRADES — ALL STANDARDS"



Butterfly Valve (Wafer & Lug)

CI/DI/WCB/SS304/SS316
PN10,PN16,Class 150
EPDM/NBR/Viton/PTFE
Lever/Gear/Actuator



Single Plate Wafer Check Valve

CI/MS/SS304/SS316(CF8M)
PN10 to Class 150
Sizes 25mm to 600mm
IS 5312 / API 6D



CI Wafer Check Valve (Large Size)

Cast Iron Body
SS304 Disc + EPDM Seat
Sizes 200mm to 600mm
IS 5312 / API 6D



Ball Valve (Flanged)

WCB/SS304/SS316/Brass
Class 150 to 600
Full & Reduced Bore
API 6D / ASME B16.34



SS Wafer Check Valve (CF8M/CF8)

SS304(CF8) / SS316(CF8M)
PN10/16/ Class 150
25mm to 600mm



Gate Valve

CI/CS/SS304/SS316 PN10-
PN25/Class 150-300
Rising & NRS Stem
IS 778 / API 600



Globe Valve

CI/WCB/SS304/SS316
Class 150 to 600
Manual & Actuated
IS 774 / API 623



Y-Strainer Valve

CI/DI/WCB/SS304/SS316
PN10 to Class 300
Mesh & Perforated
Screen 15mm to 600mm



PTFE Muffler Butterfly Valve

SGI/SS304 Body, CF8M
Disc Full PTFE Lining
Class VI Zero Leakage
Pharma/Chemical/Air



"COMPLETE RANGE — STUD BOLTS · HEX BOLTS · FLANGES · PIPE FITTINGS · GASKETS"



SS304 WASHER DIN 125



O-Ring / Rubber Seals



INSPECTION & QUALITY CHECK

INDUSTRIAL FASTENERS



Stud Bolt A193 B7/B8M

A193 B7/B7M/B8M/L7 A194 2H/8M
Nuts M10-M72



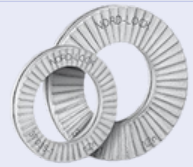
Hex Bolt Grade 8.8/10.9

Grade 8.8, 10.9, 12.9 SS304, SS316,
A2-70 M6-M48



Heavy Hex Nut 2H/8M

A194 Grade 2H, 8M SS304, SS316
M10-M72 Heavy Hex ASME B18.2



Nord Lock Washer

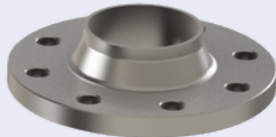
SS 316L (AISI 1.4404) Wedge Lock
Type M6-M42

INDUSTRIAL FLANGES



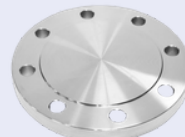
Slip-On Flange

MS/CS/SS304/SS316 ASME B16.5
Class 150 to 2500 Raised/Flat Face



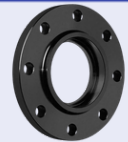
Weld Neck Flange

CS/SS304/SS316 ASME B16.5 Class
150 to 2500 Raised Face/RTJ



Blind Flange

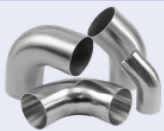
CS/SS304/SS316 ASME B16.5 Class 150
to 2500 End closure



Socket Weld Flange

CS/SS304/SS316
Class 150 to 3000

PIPE FITTINGS — BUTT WELD / SOCKET WELD / FORGED



Elbow 90°/45°

CS/SS304/SS316



Equal Tee

CS/SS304/SS316



Reducer Con./Ecc.

CS/SS304/SS316 ASME



Forged SW/SCRD

A105/SS304/SS316



KRISHNA INDUSTRIES

GST REGISTERED · IEC EXPORTER · MSME/UDYAM CERTIFIED · EST. 2017

Krishna Industries is a GST-registered B2B industrial supplier and authorised trader based in Ahmedabad, Gujarat. We source from verified Indian manufacturers and supply industrial valves, flanges, pipe fittings, and fasteners to EPC contractors, OEM manufacturers, and MRO buyers across PAN India and for export. All orders supplied with GST invoice and material test certificate.

WHY CHOOSE KRISHNA INDUSTRIES

GST Registered

GSTIN: 24AKLPP6499B1ZT
Full ITC invoicing

IMPORTER EXPORTER CODE

IEC: AKLPP6499B
FOB Mundra / JNPT

MSME Certified

UDYAM-GJ-01-0212930
Govt. recognized unit

MTC on Every Order

Material Test Certificate +
Hydrostatic test report

2-Hour RFQ Response

Formal PDF quotation
With HSN + GST terms

PAN India Dispatch

VR / Prof. Courier
All states covered



Wafer Check Valves — Ready for Dispatch



Sales Office — Ahmedabad



Quality Checked & Packed Orders

CONTACT US — B2B SALES & RFQ

DISPATCH WAREHOUSE (GUJARAT)

Ground Floor, Mansuri Block,
Opp. Dudheshwar Water Tank,
Devjipura, Ahmedabad – 380004,
Gujarat, India

SALES AND MARKETING OFFICE

Rajshree Avenue, beside Dinesh Hall,
Income Tax, Shreyas Colony,
Navrangpura, Ahmedabad, Gujarat
380009

SALES & RFQ CONTACT

Ruchin Panchal

Sales & Marketing

M / WHATSAPP: +91 93135 43530

EMAIL : SALES@KELORVALVES.COM

WEBSITE : WWW.KELORVALVES.COM

GSTIN: 24AKLPP6499B1ZT | IEC: AKLPP6499B | MOQ: 10 NOS | PAN INDIA DISPATCH | EST. 2017

REPLY WITHIN 2-4 HOURS ON WORKING DAYS · MON-SAT 9AM-7PM IST

WWW.KELORVALVES.COM | SALES@KELORVALVES.COM | +91 93135 43530 | GSTIN: 24AKLPP6499B1ZT